

The Power of 1%

60%

of people say their **401(k) is the largest or only source** of retirement savings, so why not make the most of your retirement savings account?¹

Contributions are on the rise!

In 2019, the contribution limit for a 401(k) has been increased to \$19,000²

How much should you be saving for retirement each year?

Start **as early as possible** and increase when possible

Industry experts recommended **15%** of your pre-tax income each year³

PERCENTAGES NOT YOUR THING? LET'S BREAK IT DOWN ... COULD YOU SAVE?

5% = \$5

out of every \$100 Earned

10% = \$10

out of every \$100 Earned

15% = \$15

out of every \$100 Earned

WHAT IS COMPOUND INTEREST?

Earning interest income on already existing interest income

Saving 1% more each year can make a big difference in the long run

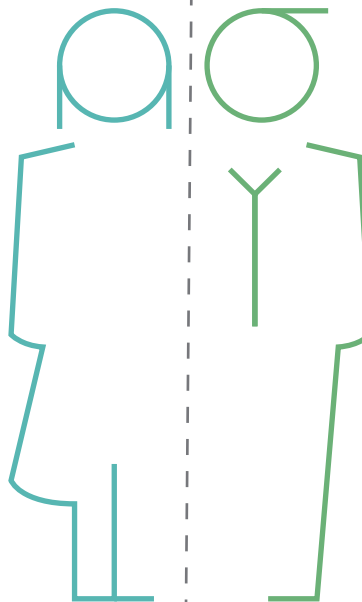
Maria

25 YEARS OLD
Income of **\$50,000**⁴

INCREASE BY 1%
= **\$149,625**
potential additional funds at retirement

INCREASE BY 3%
= **\$448,877**
potential additional funds at retirement

INCREASE BY 5%
= **\$748,128**
potential additional funds at retirement



Joe

45 YEARS OLD
Income of **\$70,000**⁴

INCREASE BY 1%
= **\$42,925**
potential additional funds at retirement

INCREASE BY 3%
= **\$128,777**
potential additional funds at retirement

INCREASE BY 5%
= **\$214,628**
potential additional funds at retirement

Have Questions? Next 401(k) Employee Education Meeting



Source

¹ Charles Schwab. 2017 401(k) Participation Survey. August 2017.

² Morningstar. You can contribute more to your 401(k) and IRA in 2019. November 2018.

³ Fidelity. How much should I save for retirement? August 2018.

⁴ Fidelity. Power of small amounts. June 2016.

*Approximation based on a 1%, 3%, or 5% increase in contribution. Continued employment from current age to retirement age, 67. We assume you are exactly your current age (in whole number of years) and will retire on your birthday at your retirement age. Number of years of savings equals retirement age minus current age. Nominal investment growth rate is assumed to be 5.5%. Hypothetical nominal salary growth rate is assumed to be 4% (2.5% inflation + 1.5% real salary growth rate). All accumulated retirement savings amounts are shown in future (nominal) dollars. Your own plan account may earn more or less than this example, and income taxes will be due when you withdraw from your account. Investing in this manner does not ensure a profit or guarantee against a loss in declining markets. Investing involves risk, including the risk of loss.

This material was created for educational and informational purposes only and is not intended as ERISA, tax, legal or investment advice. If you are seeking investment advice specific to your needs, such advice services must be obtained on your own separate from this educational material.

©2019 401k Marketing, LLC. All rights reserved. Proprietary and confidential. Do not copy or distribute outside original intent.